

# Camelot

## The Merlin

- MASTER BATH**
- 5' garden tub
  - 4' x 3'-6" shower
  - linen
  - walk-in closet 15' x 6'

- MASTER BEDROOM**
- 19' x 13'-4"
  - 10' vaulted ceiling

- FAMILY ROOM**
- 17'-4" x 14'
  - 9' ceiling
  - built-in media center

**DINING AREA**  
12' x 12'

- KITCHEN**  
14' x 13'
- island sink & snack bar

- PORCH**  
9' x 13'
- optional outdoor kit.

Note:  
36" doors typical

- CASITA**  
11'-4" x 14'-8"
- home office
  - guest suite
  - art studio

**BEDROOM 2**  
13' x 13'

**ENTRY PORTICO**

**PORCH**

**COURTYARD**

pantry

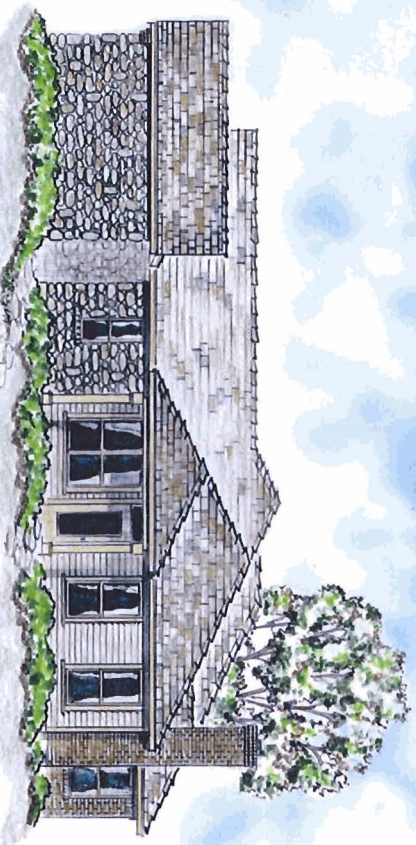
UTIL.

RESOURCE CENTER

"drop zone"



Copyright 2007 Larry W. Gamett, FAIBD



SIDE ELEVATION

Pricing, features, floorplans, and specifications are subject to change without notice at anytime at the discretion of the builder and/or developer

**RoFFino**  
custom homes

817-578-1715

254-396-3247